

# BI-METAL WEAR PARTS



## Table of contents

Introduction	4
Bucket protection products	5
Chocky bars	6
Standard Wear Bars and Blocks	7
Shaped Wear Bars	8
Knife Edges	9
Buttons and Donuts	10
Skid Bars and Boomerang	11
Wear Plates	12
Roll Bars	13
Standard Heel Shrouds	14
<b>Advanced Complementary Products</b>	
Deflektors	15
Dipper Bloks	16
Edge Protectors Light	17
Edge Protectors Medium	18
Lip & Cheek Protectors	19
Mega Chok Bars	20
Plug Plates	21
Stiffeners	22
Tapered Plates	23
Trak Bloks	24
Complementary Product Stand	25
Workshop Recommendations	26





## Designed for the toughest impact and abrasive environments

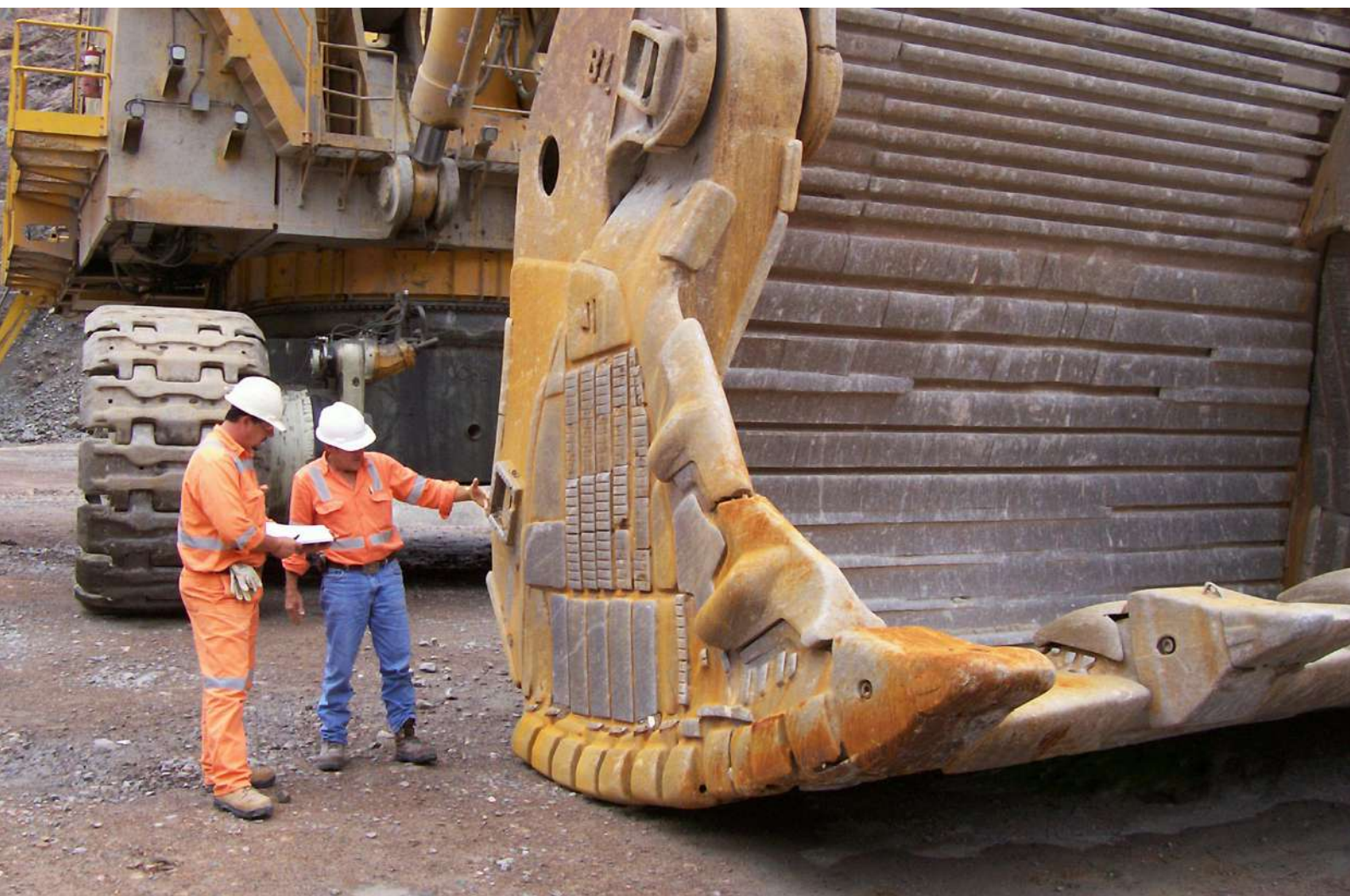
Hardox Wearparts® Bi-Metal Wear Parts are made from a composite material combining chrome-moly white iron with very high wear resistant properties (700 BHN) and the workability of a mild steel backing plate. This creates an exceptional product designed to work in the toughest impact and abrasive environments to reduce downtime and increase output.

Bi-Metal parts are available in different sizes and shapes and can be supplied with threaded holes or studs for alternative installation methods. The parts are cast with

unique numbers for traceability of related chemistry and heat treatment records.

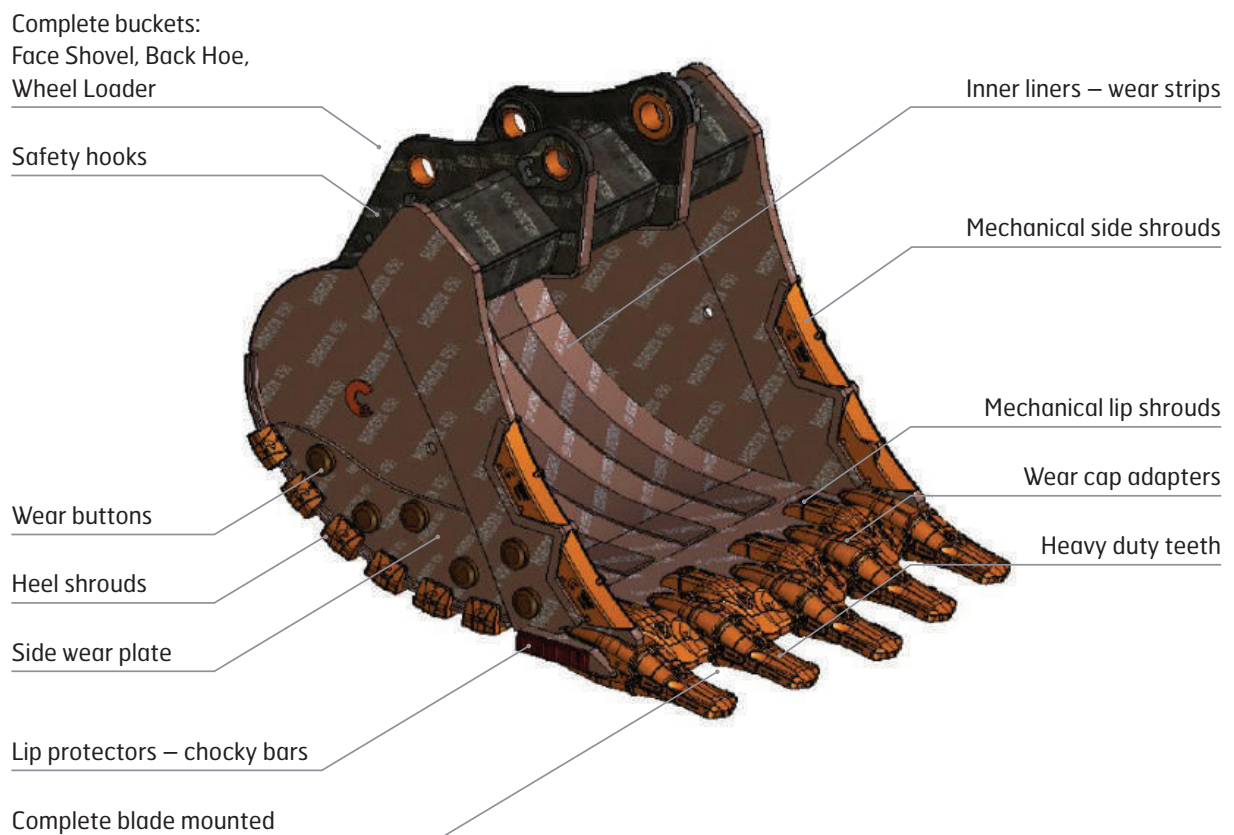
Typical applications include buckets (excavator, loader, dragline, face shovel), crusher spider arm guards, feed and discharge chutes, feeder grizzly bars, shredder and grinding mills, sugar cane knife edges, adaptor/attachment protection, and dredging equipment.

The ideal working temperature for all Bi-Metal parts is 300°C or below.



# Bucket protection products

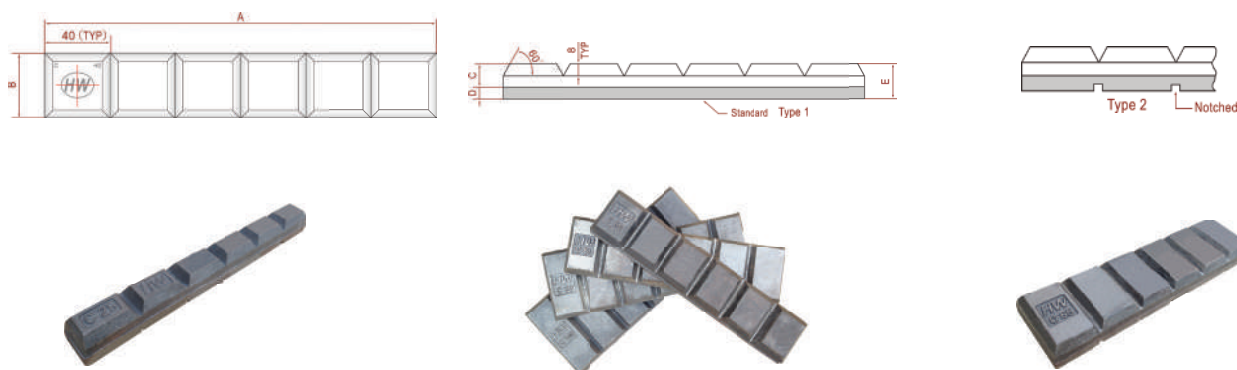
At Hardox Wearparts®, we offer a complete package of wear protection products for your buckets. Our Bi-Metal Wear Parts most suitable for buckets include Chocky Bars, Wear Buttons, Roll Bars and Shaped Wear Bars.



# CHOCKY BARS

Hardox Wearparts® Chocky Bars are available in a wide range of sizes to fit your unique applications and are a cost effective protection system for mobile and fixed operations.

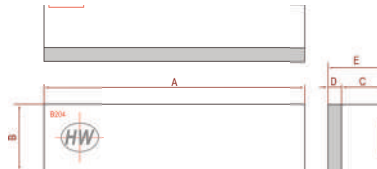
The Chocky Bars are easy to use with no excessive cutting required when compared to common sheets or plates. They can be slit and formed onto inside or outside contoured surfaces to provide an extra level of protection for wear and impact applications. They can also be supplied with notches to aid in forming, bending and cutting.



Part NO	Type	Size	Size A	B	C	D	E	F	Weight (lbs)
HW22BF88	2	9 7/16 x 1 x 7/8	9 7/16	1	9/16	5/16	7/8		2,0
HW22BH26	2	9 7/16 x 1 9/16 x 7/8	9 7/16	1 9/16	9/16	5/16	7/8		3,3
HW22BJ44	2	9 7/16 x 1 15/16 x 7/8	9 7/16	1 15/16	9/16	5/16	7/8		4,2
HW22BK66	2	9 7/16 x 2 9/16 x 7/8	9 7/16	2 9/16	9/16	5/16	7/8		5,5
HW22BL79	2	9 7/16 x 3 1/8 x 7/8	9 7/16	3 1/8	9/16	5/16	7/8		7,0
HW22LL27	2	9 7/16 x 3 9/16 x 7/8	9 7/16	3 9/16	9/16	5/16	7/8		7,7
HW22BN22	2	9 7/16 x 3 15/16 x 7/8	9 7/16	3 15/16	9/16	5/16	7/8		8,6
HW22LN95	2	9 7/16 x 5 1/8 x 7/8	9 7/16	5 1/8	9/16	5/16	7/8		11,2
HW22FX34	2	9 7/16 x 5 7/8 x 7/8	9 7/16	5 7/8	9/16	5/16	7/8		13,4

# STANDARD WEAR BARS AND BLOCKS

Our Wear Bars and Blocks can be used in a combination of different lengths to create unique layouts and patterns. They are perfect for conveyor corners, edges and hard to reach places where impact and wear resistance is needed.

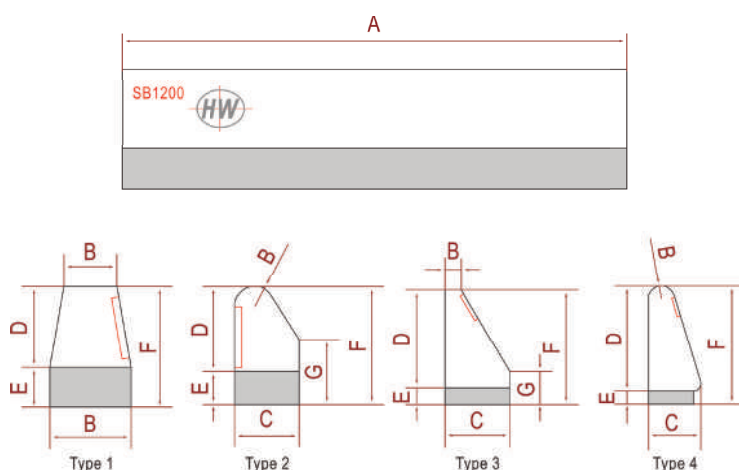


Part NO	Type	Size	Size A	B	C	D	E	F	Weight (lbs)
HW22LR85	STD	4 x 1 5/16 x 1 1/4	4	1 5/16	1	5/16	1 1/4		2.0
HW22LS97	STD	5 x 2 x 1 7/8	5	2	1 1/2	3/8	1 7/8		5.3
HW22BS98	STD	5 7/8 x 1 15/16 x 2	5 7/8	1 15/16	1 9/16	3/8	2		6.4
HW22CZ73	STD	5 7/8 x 2 15/16 x 1 1/2	5 7/8	2 15/16	1 1/8	3/8	1 1/2		7.5
HW22LX47	STD	5 7/8 x 2 15/16 x 2	5 7/8	2 15/16	1 9/16	3/8	2		9.7
HW22BR74	STD	5 7/8 x 2 15/16 x 2 3/8	5 7/8	2 15/16	1 15/16	3/8	2 3/8		11.7
HW22MC34	STD	6 x 1 1/2 x 1 1/4	6	1 1/2	1	5/16	1 1/4		3.3
HW22MD67	STD	7 1/2 x 1 15/16 x 1 1/8	7 1/2	1 15/16	1 3/16	3/8	1 1/8		4.9
HW22MF93	STD	7 5/8 x 3 1/8 x 2	7 5/8	3 1/8	1 1/2	1/2	2		13.4
HW22MH38	STD	7 11/16 x 1 x 1 1/8	7 11/16	1	1 3/16	3/8	1 1/8		2.4
HW22MJ73	STD	7 7/8 x 1 x 1	7 7/8	1	9/16	3/8	1		2.2
HW22MK87	STD	8 x 2 x 3/4	8	2	1/2	5/16	3/4		3.5
HW22MM43	STD	8 1/2 x 1 15/16 x 2	8 1/2	1 15/16	1 1/2	1/2	2		9.0
HW22MN76	STD	9 1/16 x 1 15/16 x 2	9 1/16	1 15/16	1 1/2	1/2	2		9.9
HW22MQ32	STD	9 1/2 x 3 15/16 x 2 1/4	9 1/2	3 15/16	1 1/2	1 3/16	2 1/4		26.0
HW22MR54	STD	11 9/16 x 3 1/8 x 2	11 9/16	3 1/8	1 1/2	1/2	2		20.3
HW22MS75	STD	9 13/16 x 2 3/8 x 3/4	9 13/16	2 3/8	1/2	5/16	3/4		5.3
HW22MT89	STD	10 x 1 15/16 x 2	10	1 15/16	1 9/16	3/8	2		11.0
HW22MW25	STD	10 x 2 x 3/4	10	2	1/2	5/16	3/4		4.4
HW22MX45	STD	11 9/16 x 1 15/16 x 2	11 9/16	1 15/16	1 9/16	3/8	2		12.8
HW22MZ66	STD	7 7/8 x 2 15/16 x 3	7 7/8	2 15/16	2 1/2	1/2	3		19.6
HW22NB89	STD	9 1/16 x 1 15/16 x 2 3/8	9 1/16	1 15/16	1 9/16	1 3/16	2 3/8		11.9
HW22BV44	STD	7 7/8 x 1 15/16 x 2	7 7/8	1 15/16	1 1/2	1/2	2		8.6
HW22BW77	STD	9 13/16 x 1 15/16 x 2	9 13/16	1 15/16	1 1/2	1/2	2		10.8
HW22NG78	STD	11 13/16 x 1 x 1	11 13/16	1	9/16	3/8	1		3.3
HW22DB82	STD	11 13/16 x 1 1/2 x 1 1/4	11 13/16	1 1/2	1	5/16	1 1/4		6.6
HW22FV84	STD	11 13/16 x 5 7/8 x 2 3/8	11 13/16	5 7/8	1 7/8	1/2	2 3/8		46.5
HW22NL64	STD	11 13/16 x 1 15/16 x 2 3/8	11 13/16	1 15/16	1 9/16	1 3/16	2 3/8		15.4
HW22BX93	STD	11 13/16 x 1 15/16 x 2	11 13/16	1 15/16	1 1/2	1/2	2		13.0
HW22NP22	STD	17 x 1 15/16 x 2	17	1 15/16	1 1/2	1/2	2		18.7
HW22NQ29	STD	18 1/16 x 1 1/2 x 1 1/4	18 1/16	1 1/2	1	1/4	1 1/4		9.3
HW22NR65	STD	15 3/4 x 1 11/16 x 1	15 3/4	1 11/16	9/16	3/8	1		7.5
HW22NS79	STD	17 11/16 x 1 1/2 x 1 1/4	17 11/16	1 1/2	1	1/4	1 1/4		8.8
HW22NV29	STD	23 5/8 x 1 15/16 x 2	23 5/8	1 15/16	1 1/2	1/2	2		26.0
HW22NW44	STD	24 x 1 x 1 5/8	24	1	1 3/16	3/8	1 5/8		10.6



# SHAPED WEAR BARS

Hardox Wearparts® Shaped Wear Bars are ideal for prevention of gouging wear allowing buckets or equipment to run longer and requiring far less down time for maintenance. The bars are available in different sizes and shapes to suit your specific application.

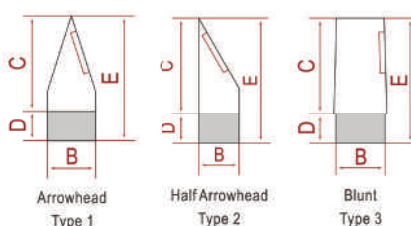
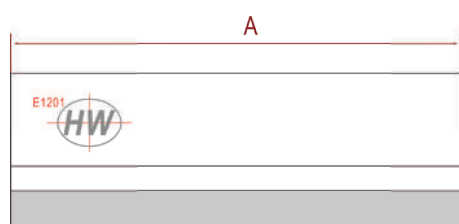


Part NO	Type	Size	Size A	B	C	D	E	F	Weight (lbs)
HW22NX75	1	7 7/8 x 13/16 x 13/16	7 7/8	1/2	13/16	13/16	3/8	1 3/16	1.8
HW22NZ92	1	7 15/16 x 1 x 1 3/8	7 15/16	3/8	1	1	3/8	1 3/8	2.0
HW22PC29	1	9 5/8 x 1 x 1 3/8	9 5/8	3/8	1	1	3/8	1 3/8	1.8
HW22PD46	2	10 13/16 x 5/8 x 1 1/8	10 13/16	3/16	5/8	13/16	3/8	1 1/8	2.0
HW22PF62	3	5 7/8 x 19/16 x 2 3/4	5 7/8	3/8	19/16	2 3/8	3/8	2 3/4	5.3
HW22PG77	3	7 7/8 x 1 x 2 5/16	7 7/8	1/8	1	1 7/8	1/2	2 5/16	3.3
HW22PH99	3	15 3/4 x 1 x 2 5/16	15 3/4	1/8	1	1 7/8	1/2	2 5/16	6.4
HW22PK46	4	4 15/16 x 19/16 x 3 9/16	4 15/16	3/8	19/16	3 1/8	3/8	3 9/16	9.5
HW22PL59	4	7 7/8 x 1 x 1 15/16	7 7/8	3/8	1	1 1/2	1/2	1 15/16	3.3
HW22PM75	4	15 3/4 x 1 x 1 15/16	15 3/4	3/8	1	1 1/2	1/2	1 15/16	6.5



# KNIFE EDGES

Hardox Wearparts® Knife Edges have sharp edges that retain their sharpness and cutting efficiency. For appropriate applications, they are a cost effective alternative to conventional hardfacing methods.

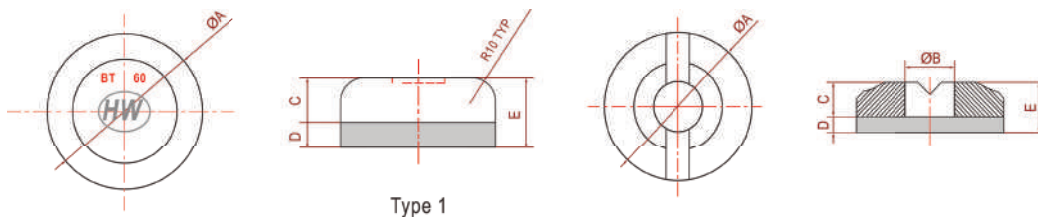


Part N0	Type	Size	Size A	B	C	D	E	F	Weight (lbs)
HW22PP29	1	8 x 3/4 x 2	8	3/4	1 1/2	1/2	2		2.4
HW22PQ43	1	8 x 7/8 x 2	8	7/8	1 1/2	1/2	2		2.9
HW22PR59	2	8 x 1 x 2 1/2	8	1	1 15/16	1/2	2 1/2		4.4
HW22PS83	1	12 x 3/4 x 2	12	3/4	1 1/2	1/2	2		3.5
HW22PV24	1	12 x 1 x 2	12	1	1 1/2	1/2	2		4.8
HW22PW46	2	8 x 5/8 x 2	8	5/8	1 1/2	1/2	2		2.2
HW22PX74	2	12 x 1 x 2 1/4	12	1	1 9/16	5/8	2 1/4		5.5
HW22PZ79	3	6 1/4 x 1 1/8 x 2	6 1/4	1 1/8	1 1/2	1/2	2		4.0
HW22QB93	3	8 x 3/4 x 2	8	3/4	1 1/2	1/2	2		3.5
HW22QC98	3	8 x 1 1/8 x 2	8	1 1/8	1 1/2	1/2	2		5.1
HW22QF37	3	8 x 1 x 1	8	1	1 1/16	5/16	1		2.4

# BUTTONS AND DONUTS

Hardox Wearparts® Buttons and Donuts are perfect for a quick fix for localized wear trouble areas, transfer points and for a variety of buckets including loaders, excavators and dragline.

Available in sizes from 1 15/16 to 5 7/8 inches, Buttons and Donuts are designed specifically for easy and adaptive installation onto a wide range of wear problem areas. For the appropriate application, they are an excellent alternative to costly and labor intensive hardfacing or when there is a need to cut wear strips from a full sheet of wear plate.



Type 1

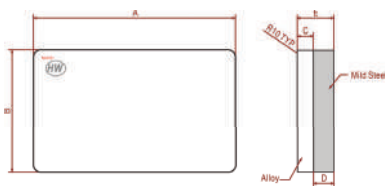


Part N0	Type	Size	Size A	B	C	D	E	F	Weight (lbs)
HW22DR59	1	ø 1 15/16 x 1 1/8	1 15/16		11/16	3/8	1 1/8		1.1
HW22DF46	1	ø 2 3/8 x 1 1/8	2 3/8		11/16	3/8	1 1/8		1.5
HW22BP34	1	ø 2 15/16 x 1 1/8	2 15/16		11/16	3/8	1 1/8		2.0
HW22BQ53	1	ø 3 9/16 x 1 1/8	3 9/16		11/16	3/8	1 1/8		2.6
HW22QS68	1	ø 3 15/16 x 1 1/8	3 15/16		13/16	3/8	1 1/8		3.7
HW22DD26	1	ø 4 1/2 x 1 1/4	4 1/2		13/16	1/2	1 1/4		5.7
HW22FZ42	1	ø 5 7/8 x 1 5/8	5 7/8		1	5/8	1 5/8		12.6

Part N0	Type	Size	Size A	B	C	D	E	F	Weight (lbs)
HW22QG48	DONUT	ø 2 15/16 x 1	2 15/16	1	11/16	5/16	1		1.5
HW22QH57	DONUT	ø 3 15/16 x 1	3 15/16	1 15/16	11/16	5/16	1		2.2
HW22QJ84	DONUT	ø 3 15/16 x 1 1/4	3 15/16	2 3/4	15/16	5/16	1 1/4		2.2
HW22QK96	DONUT	ø 5 1/8 x 7/8	5 1/8	3 1/8	9/16	5/16	7/8		2.9

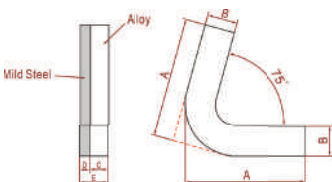
# SKID BARS AND BOOMERANGS

Hardox Wearparts® Skid Bars are designed to protect and extend the life of wheel loaders, excavators and dippers for mining and quarry applications.



Part NO	Type	Size	Size A	B	C	D	E	F	Weight (lbs)
HW22QX34	STD	6 1/16 x 4 x 1 3/8	6 1/16	4	7/8	1/2	1 3/8		8.2
HW22CB46	STD	7 7/8 x 5 7/8 x 1 3/4	7 7/8	5 7/8	13/16	1	1 3/4		23.1
HW22CC55	STD	9 13/16 x 5 7/8 x 1 3/4	9 13/16	5 7/8	13/16	1	1 3/4		28.9
HW22CD75	STD	9 13/16 x 9 13/16 x 1 3/4	9 13/16	9 13/16	13/16	1	1 3/4		48.3
HW22CG23	STD	9 13/16 x 9 13/16 x 3	9 13/16	9 13/16	1 15/16	1	3		81.1

Boomerangs are ideal for protection packages on buckets, rock boxes, truck bodies and screen decks. They are easy to install and can provide a convenient option for cutting various plates to protect wear areas.



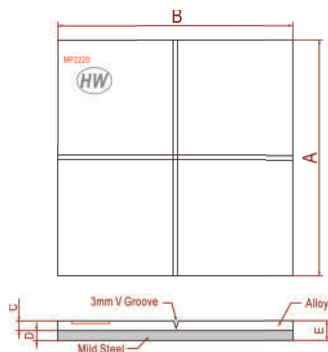
Part NO	Type	Size	Size A	B	C	D	E	F	Weight (lbs)
HW22RG96	STD	4 3/4 x 4 3/4 x 1 1/8	4 3/4	13/16	11/16	3/8	1 1/8		2.9
HW22RJ37	STD	7 1/16 x 7 1/16 x 1 1/4	7 1/16	19/16	7/8	3/8	1 1/4		6.6

# WEAR PLATES

Available in a wide range of sizes or made to customer requirements, Bi-Metal Wear Plates are commonly used in a combination of different sizes to create optimum layouts that provide the greatest impact and abrasion wear resistance.

Ideal for chutes, hoppers, bins, liners, impact walls, rock boxes and other applications, the Wear Plate can be simply welded onto a surface with no pre- or post-heating required.

Wear Plates can be supplied with studs or bolt holes for easier installation.

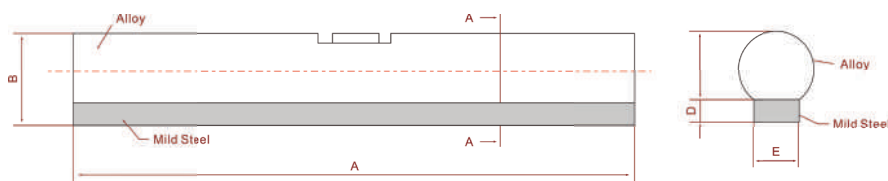


Part NO	Type	Size	Size A	B	C	D	E	F	Weight (lbs)
HW22RK59	STD	6 x 10 x 1 1/8	6	10	13/16	3/8	1 1/8		19,6
HW22RL78	STD	6 x 8 x 1 1/8	6	8	13/16	3/8	1 1/8		15,7
HW22RM99	STD	7 7/8 x 7 7/8 x 3/4	7 7/8	7 7/8	1/2	1/4	3/4		12,6
HW22RP52	STD	7 7/8 x 7 7/8 x 3/4	7 7/8	7 7/8	3/8	3/8	3/4		13,9
HW22RQ57	STD	9 1/16 x 11 13/16 x 1	9 1/16	11 13/16	9/16	5/16	1		27,1
HW22RR94	STD	9 13/16 x 9 13/16 x 1 1/8	9 13/16	9 13/16	13/16	3/8	1 1/8		32,2
HW22RT35	STD	11 13/16 x 11 13/16 x 3/4	11 13/16	11 13/16	1/2	1/4	3/4		28,0
HW22GB47	STD	11 13/16 x 11 13/16 x 3/4	11 13/16	11 13/16	3/8	3/8	3/4		31,1



# ROLL BARS

Roll Bars are unique products designed to protect the sidebar leading edges on excavator, loader and shovel buckets as well as dozer side plates. The curved radius provides maximum wear protection while diverting the flow of material.



Part NO	Type	Size	Size A	B	C	D	E	F	Weight (lbs)
HW22RW84	STD	9 x 1 1/2 x 3/4	9	1 1/2	1 1/8	3/8	3/4	R5/8	3,6
HW22RX93	STD	12 x 2 1/16 x 1 1/2	12	2 1/16	1 11/16	3/8	1 1/2	R1	11,4
HW22SB26	STD	12 x 2 11/16 x 2 1/2	12	2 11/16	2 5/16	3/8	2 1/2	R1 1/2	23,1

## RECOMMENDED APPLICATIONS



Pump Box Liners



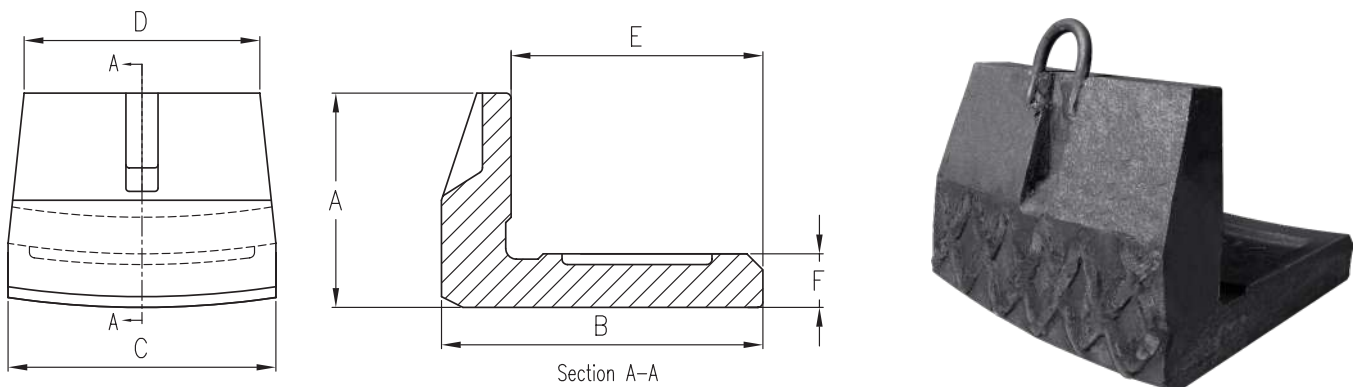
Corner Shrouds



Banana Screens

# STANDARD HEEL SHROUDS

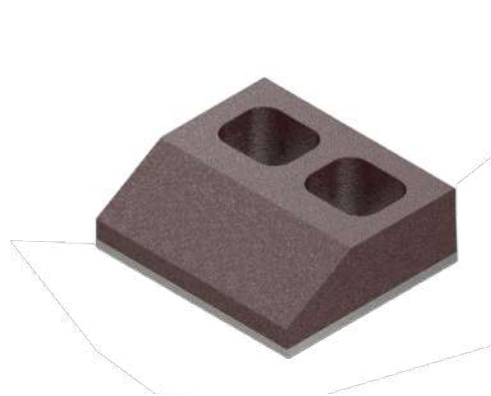
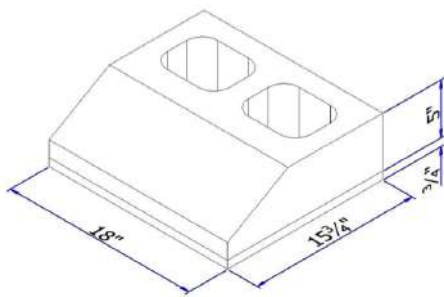
Protect your buckets from wear with heel shrouds that wrap around the outside bucket corners. By using shrouds you will extend the lifetime of your bucket reducing your maintenance costs. Less maintenance also means less production loss.



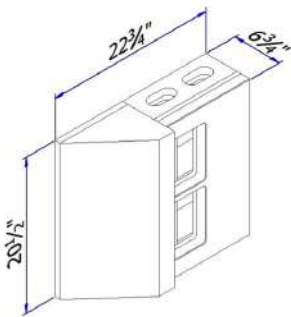
Part NO	Excavator class	Dimensions (inches)						Weight (lbs)
		A	B	C	D	E	F	
<b>HW-CG1</b>	20-40 ton	3 15/16	6 57/64	7 13/32	7 1/64	5 5/16	1 17/64	22
<b>HW-CG2</b>	40-80 ton	3 15/16	7 7/8	7 13/32	7 1/64	5 29/32	1 1/2	29
<b>HW-CG3</b>	80-180 ton	5 29/32	9 27/32	7 13/32	6 17/32	7 7/8	1 31/32	44
<b>HW-CG4</b>	180-400 ton	7 7/8	11 13/16	9 27/32	8 21/32	9 1/4	1 31/32	84
<b>HW-CG5</b>	400 + ton	9 27/32	13 25/32	9 27/32	8 21/32	9 1/4	3 15/16	176

# DEFLECTORS

Comes in 2 types to protect Dutchman locking systems and Reducer door bump stops.



MDI-1

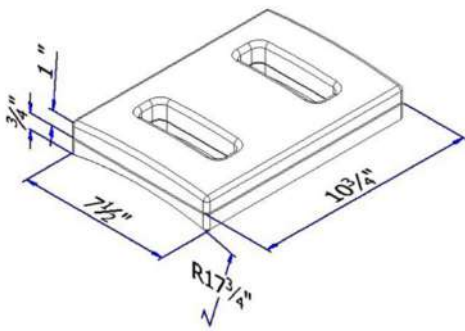


MDI-2

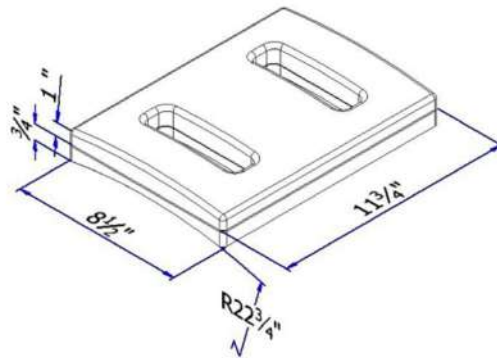
Part NO	Description	Bimetal Cast Material Grade (inches)	Size (inches) L x W x T	Weight (lbs)
<b>MDE-1</b>	MAK-Deflektor, Type 1 – Dutchman Protector for CAT 7495 use 2 pieces and for P&H 4100 use 3 pieces	XAB 5 1/8 on 25/32	18 1/8 x 15 3/4 x 5 29/32	704.6
<b>MDE-2</b>	MAK-Deflektor, Type 2 – Reducer Kit Door Bump Stop for CAT 7495	XAB castings on leading edges up to 7 3/32	To fit CAT 7495 Dipper	1011

# DIPPER BLOCKS

Wear blocks designed to allow wear liners to be fitted to the tighter external radius areas of the front and back sections on dipper bodies



MDIBL-1



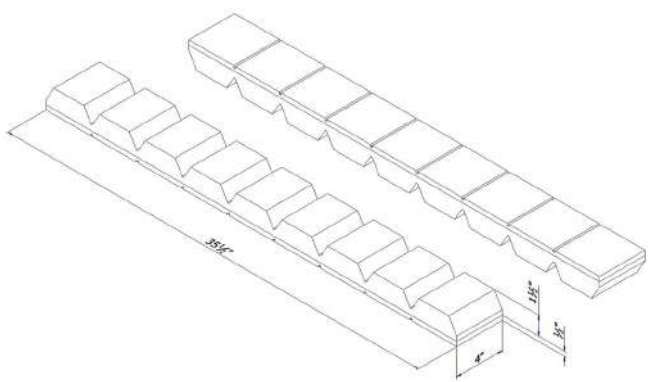
MDIBL-2

Part NO	Description	Bimetal Cast Material Grade (inches)	Size (inches) L x W x T	Weight (lbs)
<b>MDIBL-1</b>	MAK-Dipper Blok, Type 1	XAB 1 ON 25/32	10 7/8 x 7 15/32 x 1 25/32	28.6
<b>MDIBL-2</b>	MAK-Dipper Blok, Type 2	XAB 1 ON 25/32	11 7/8 x 8 15/32 x 1 25/32	35.3

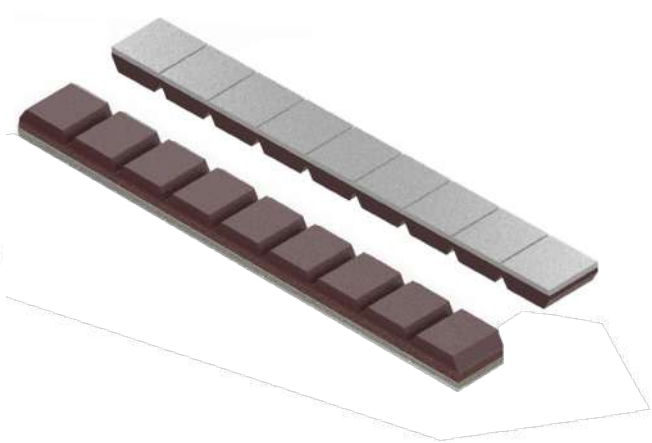


# MEGA CHOK BARS

- A large version of the popular smaller chocky bars
- Typically used on larger buckets and dippers
  - Allows for flat internal and external radiiuses to be fitted
  - Notched top and bottom for easy cutting and forming



MMECH-1

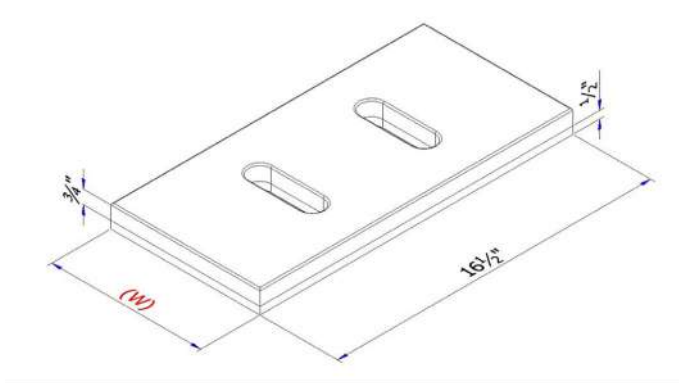


Part NO	Description	Bimetal Cast Material Grade	Size (inches) L x W x T	Weight (lbs)
MMECH-1	MAK-Mega Chok Bars, Type 1	XAB 1 9/16 on 13/32	35 7/16 x 3 15/16 x 1 31/32	57.3

# PLUG PLATES

Flat wear plates in various sizes with welding plug holes to allow for strong weld installations

- Designed expressly to fit the front lip area behind the GET and floor wear plates of the CAT 7495 Dipper
- Can be used for other suitable applications

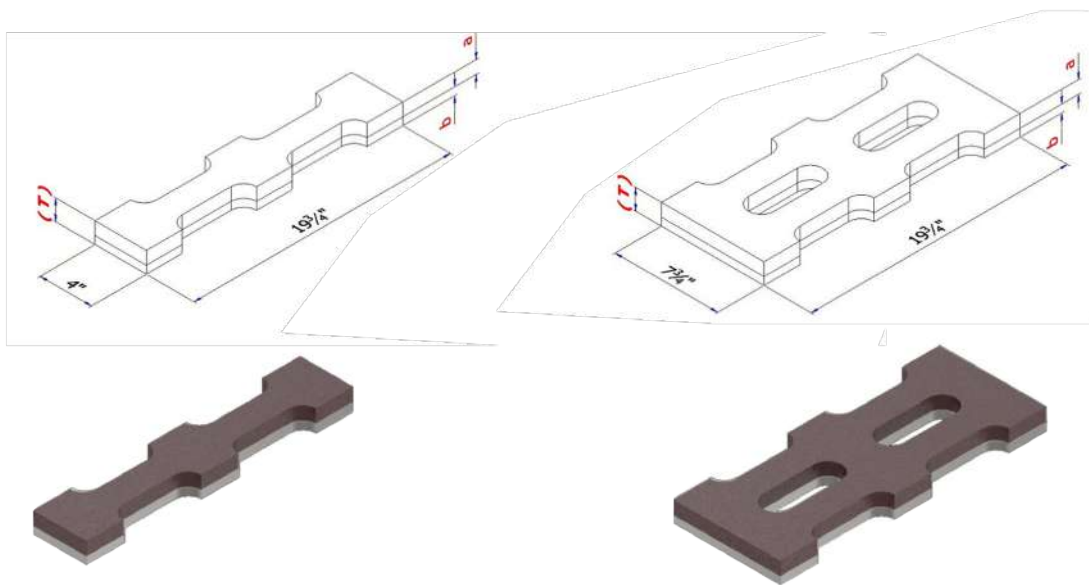


Part NO	Description	Bimetal Cast Material Grade (inches)	Size (inches) L x W x T	Weight (lbs)
<b>MPLPL-1</b>	MAK-Plug Plate, Type 1	XAB 23/32 on 13/32	16 17/32 x 7 7/8 x 1 1/8	40.8
<b>MPLPL-2</b>	MAK-Plug Plate, Type 2	XAB 23/32 on 13/32	16 17/32 x 9 27/32 x 1 1/8	52
<b>MPLPL-3</b>	MAK-Plug Plate, Type 3	XAB 23/32 on 13/32	16 17/32 x 11 7/8 x 1 1/8	61
<b>MPLPL-4</b>	MAK-Plug Plate, Type 4	XAB 23/32 on 13/32	16 17/32 x 13 25/32 x 1 1/8	71.8
<b>MPLPL-5</b>	MAK-Plug Plate, Type 5	XAB 23/32 on 13/32	16 17/32 x 15 3/4 x 1 1/8	82.6

# TRAK BLOKS

System of single and double wear plates that can be used individually or together

- Can be used on flat and internal and external radius areas



SINGLE

DOUBLE

NOTE :  
- a : XAB  
- b : mild steel ( backing plate )

Part NO	Description	Bimetal Cast Material Grade	Size (inches) L x W x T	Weight (lbs)
<b>MTRBL-1</b>	MAK-Trak Blok, Type 1, Light Single	XAB 6/16 on 6/16	19 11/16 x 3 15/16 x 4/5	2.7
<b>MTRBL-2</b>	MAK-Trak Blok, Type 2, Light Double	XAB 6/16 on 6/16	19 11/16 x 7 14/16 x 4/5	5.5
<b>MTRBL-3</b>	MAK-Trak Blok, Type 3, Medium Single	XAB 1 on 9/16	19 11/16 x 3 15/16 x 1 4/7	5.5
<b>MTRBL-4</b>	MAK-Trak Blok, Type 4, Medium Double	XAB 1 on 9/16	19 11/16 x 7 14/16 x 1 4/7	10.5
<b>MTRBL-5</b>	MAK-Trak Blok, Type 5, Heavy Single	XAB 1 9/16 on 13/16	19 11/16 x 3 15/16 x 2 1/3	7.7
<b>MTRBL-6</b>	MAK-Trak Blok, Type 6, Heavy Double	XAB 1 9/16 on 13/16	19 11/16 x 7 14/16 x 2 1/3	15.9

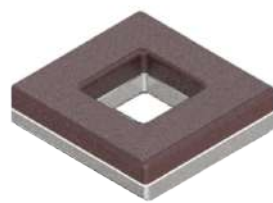
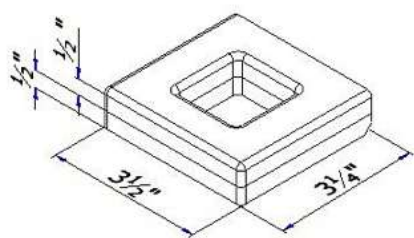
## Disclaimer

This information is offered in good faith by Makuri Technology Pte Ltd, but no representation is made or warranty given (either express or implied) as to the completeness or accuracy of the information that it contains. You should always verify any of this information, before you act upon it, by contacting Makuri Technology Pte Ltd or its Distributors. By using this data you agree that neither Makuri Technology Pte Ltd, nor any of its officers, employees, agents or contractors, will be liable for any direct or indirect loss or damage you may suffer or incur arising directly or indirectly from the use of any information contained therein. All information contained within is proprietary material and may also be subject to copyright, registered marks or patents that belong to Makuri Technology Pte Ltd. All brand names, model names, or marks are owned by their respective manufacturers. Makuri Technology Pte Ltd has no affiliation with any OEMs other than those clearly stated. Any OEM terms are used for identification purposes only and are not intended to indicate affiliation with or approval by the OEM.

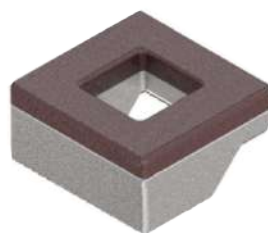
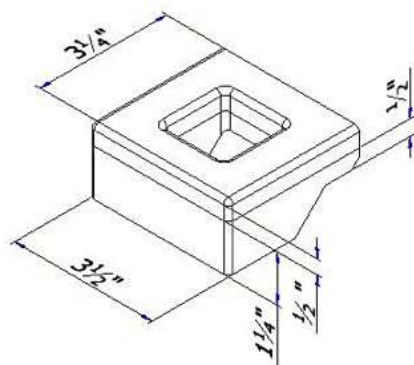
# EDGE PROTECTORS-LIGHT

A universal Heel Shroud replacement system.

- Comes in both Light or Medium sizes
- Fits all major bucket construction types
- Fits both flat and radiused outer bucket profiles

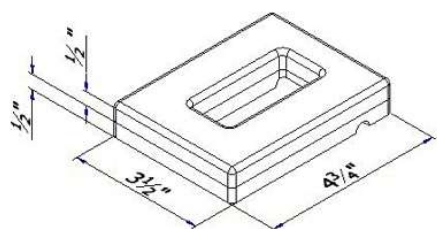


MEDPR-1

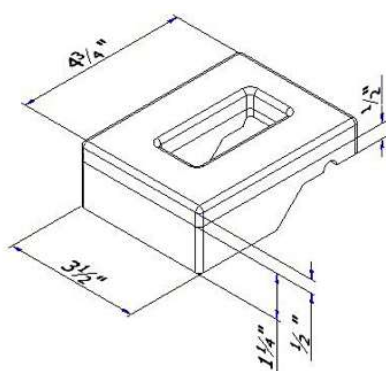


MEDPR-2





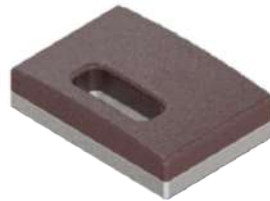
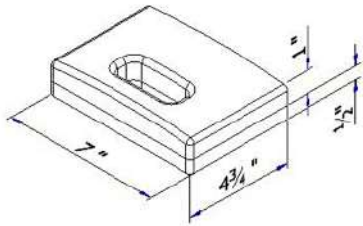
MEDPR-3



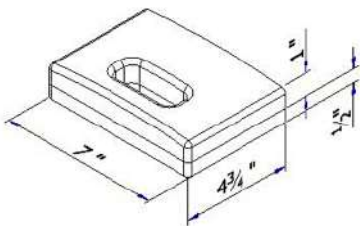
MEDPR-4

Part NO	Description	Bimetal Cast Material Grade (inches)	Size (inches) L x W x T	Weight (lbs)
<b>MEDPR-1</b>	MAK-Edge Protector, Type 1, Light Side Flat	XAB 15/32 on 13/32	3 11/32 x 3 17/32 x 7/8	2.4
<b>MEDPR-2</b>	MAK-Edge Protector, Type 2, Light Side Step	XAB 15/32 on 3/16	3 11/32 x 3 17/32 x 21/32	4.4
<b>MEDPR-3</b>	MAK-Edge Protector, Type 3, Light Base Flat	XAB 15/32 on 13/32	4 23/32 x 3 17/32 x 7/8	4.4
<b>MEDPR-4</b>	MAK-Edge Protector, Type 4, Light Base Step	XAB 15/32 on 1 3/16	4 23/32 x 3 17/32 x 21/32	5.5

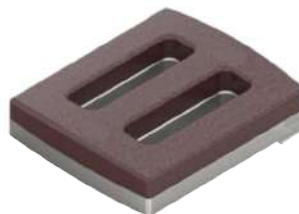
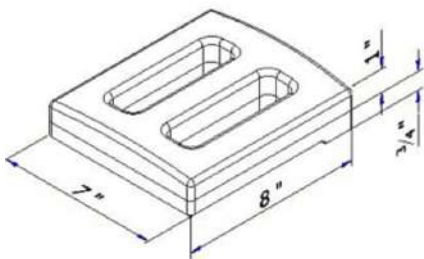
# EDGE PROTECTORS-MEDIUM



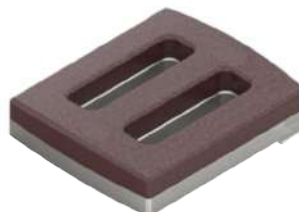
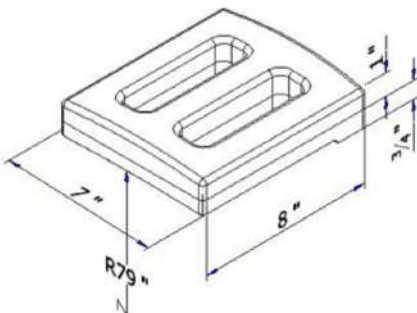
MEDPR-5



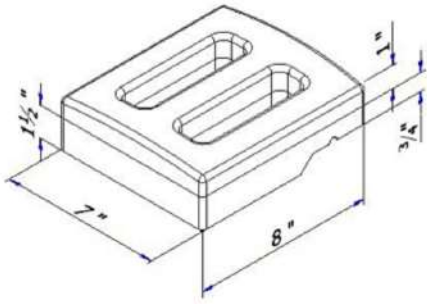
MEDPR-6



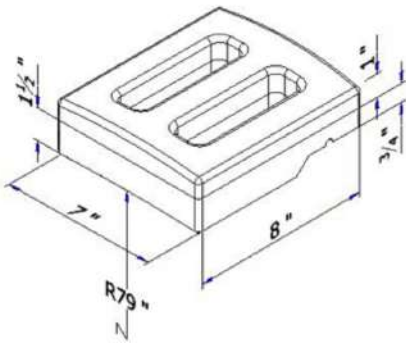
MEDPR-7



MEDPR-8



MEDPR-9



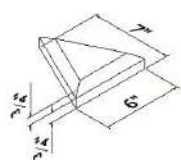
MEDPR-10

Part NO	Description	Bimetal Cast Material Grade (inches)	Size (inches) L x W x T	Weight (lbs)
<b>MEDPR-5</b>	MAK-Edge Protector, Type 5, Medium Side Flat	XAB 1 on 25/32	6 7/8 x 4 23/32 x 1 25/32	14.3
<b>MEDPR-6</b>	MAK-Edge Protector, Type 6, Medium Side Step	XAB 1 on 2 9/6	6 7/8 x 4 23/32 x 2 9/16	17.6
<b>MEDPR-7</b>	MAK-Edge Protector, Type 7, Medium Base Flat	XAB 1 on 25/32	8 1/16 x 6 7/8 x 1 25/32	19.8
<b>MEDPR-8</b>	MAK-Edge Protector, Type 8, Medium Base Flat Radius	XAB 1 on 25/32	8 1/16 x 6 7/8 x 1 25/32	19.8
<b>MEDPR-9</b>	MAK-Edge Protector, Type 9, Medium Base Step	XAB 1 on 2 9/6	8 1/16 x 6 7/8 x 2 9/16	25.3
<b>MEDPR-10</b>	MAK-Edge Protector, Type 10, Medium Base Step Radius	XAB 1 on 2 9/6	8 1/16 x 6 7/8 x 2 9/16	25.3

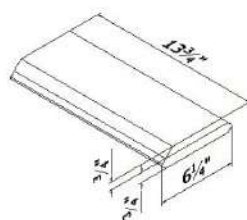
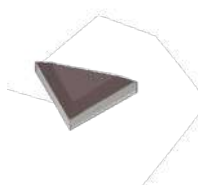
# STIFFENERS

Internal wear and structural component system that adds stiffness and reduces hang up

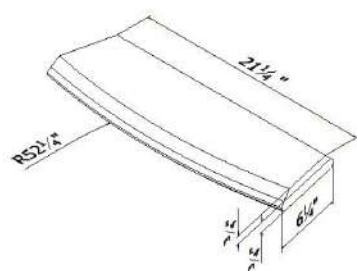
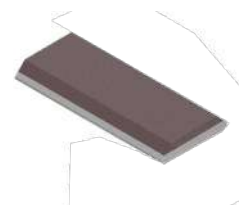
- Comes in 3 shapes plus end pieces allowing for fitment to all bucket sizes and radiuses



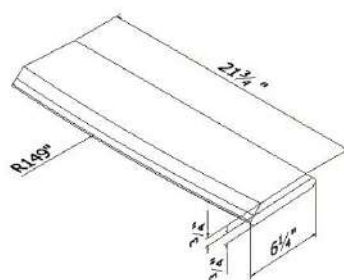
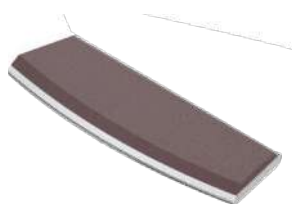
MST-1



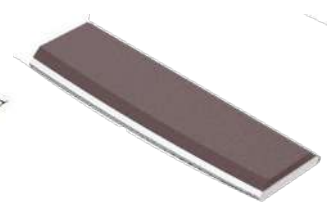
MST-2



MST-3



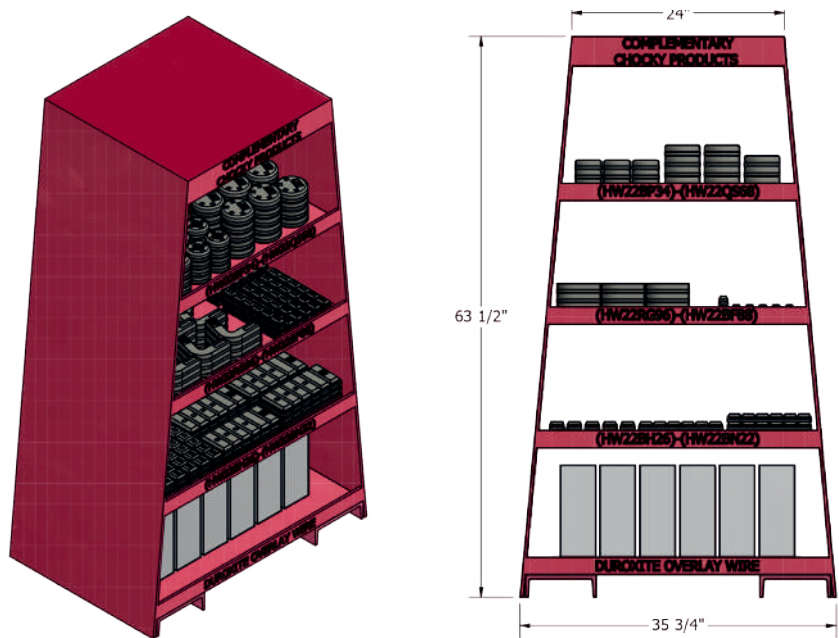
MST-4



Part NO	Description	Bimetal Cast Material Grade	Size (inches) L x W x T	Weight (lbs)
<b>MST-1</b>	MAK-Stiffener, Type 1, End Section	XAB 10/16 on 13/16	7 3/32 x 5 29/32 x 1 13/32	6.6
<b>MST-2</b>	MAK-Stiffener, Type 2, Straight	XAB 10/16 on 13/16	13 25/32 x 6 5/16 x 1 13/32	14
<b>MST-3</b>	MAK-Stiffener, Type 3, Small Radius	XAB 10/16 on 13/16	21 1/4 x 6 5/16 x 1 13/32	22.7
<b>MST-4</b>	MAK-Stiffener, Type 4, Large Radius	XAB 10/16 on 13/16	21 11/32 x 6 5/16 x 1 13/32	22.6

# COMPLEMENTARY PRODUCT STAND

Store your complementary wear parts in our sturdy Complementary Product Stand. Designed to hold more than 1900 pounds of wear parts.



## Complementary Product Stand

Description	Height (inches)	Top Width (inches)	Bottom Width (inches)	Weight (lbs)
Complementary Product Stand	63 1/2	24	35 3/4	950

## Recommended Wear Parts for Stand

Part NO	Description	Dimensions (inches)	Total Weight (lbs)	Qty/Stand (inches)
HW22BP34	Wear Buttons	2 15/16	101.4	50
HW22RG96	Wear Booms	4 3/4 x 4 3/4 x 1 1/8	121.1	40
HW22BF88	Chocky Bars	9 7/16 x 1 x 15/16	53.4	25
HW22BH26	Chocky Bars	9 7/16 x 1 9/16 x 15/16	84.4	25
HW22BN22	Chocky Bars	9 7/16 x 3 15/16 x 15/16	214.6	25
HW22QS68	Wear Buttons	3 15/16 x 1 1/8	204.2	50
	Overlay Wire		198	6 spools

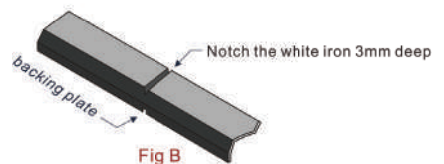
# WORKSHOP RECOMMENDATIONS

## CUTTING

High pressure water jet cutting is recommended for cutting bi-metal parts. Thermal, oxy fuel, arc-air or plasma cutting is not recommended. Abrasive disc cutting is acceptable for blocks less than 1 inch in thickness.

Process:

- Secure the block in a vice or clamp
- Notch the backing plate (Fig A) and notch the white iron. 12 inches deep opposite the notch on the backing plate (Fig B)
- Wrap a cloth around the block and carefully hit it using a soft face hammer—the block should break cleanly at the notch



## WELDING

Ensure the surface that the block is attached to is as flat as possible and the area to be welded is clean.

Process:

- Clamp and tack weld the block into position
- Stitch weld, laying 1-15/16 inches maximum length each run, alternating ends or sides to minimize heat penetration. DO NOT deposit weld within .08 inches from the joint (Fig C)
- DO NOT WELD CONTINUOUSLY –Continuous welding may cause warpage, delamination and cracking; maximum temperature allowed is 200°C
- Use low hydrogen weld rods or gas covered cored wire



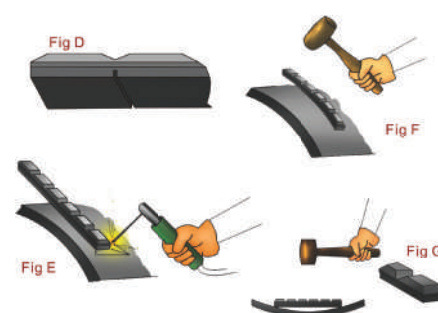


## FORMING CHOCKY BLOCKS

For severe curves with a radius less than 12 inches, or inside curves, it is advisable to notch the steel backing plate opposite the “V” to assist in forming (Fig D). Please note that the chocky bar may crack during bending which is normal.

Process:

- Clean the surface to which the chocky bar will be welded
- Tack weld one end of the bar with a 1/2 inch weld (Fig E)
- For outside curves, hammer down the non-welded area and with a soft face hammer bend the bar to match mating radius (Fig F)
- For inside curves starting in the center, strike the bar with a soft face hammer to bend the piece to match mating radius (Fig G)
- Stitch weld as per the welding procedure



## COMPLEMENTARY WEAR PARTS DELIVERED ON SITE — YOUR ONE-STOP WEAR SHOP ON WHEELS





Hardox Wearparts® is a worldwide network of service centers providing wear parts and wear solutions for optimized productivity and service life. Hardox Wearparts® is a part of SSAB, the manufacturer of Hardox® wear plate.

**SSAB Special Steels**

300 Corporate Center Drive,  
Suite 010  
Pittsburgh, PA 15108  
USA  
P +1 800 442 7369  
F +1 412 203 1650  
[contactusa@ssab.com](mailto:contactusa@ssab.com)

[info@hardoxwearparts.com](mailto:info@hardoxwearparts.com)  
[www.hardoxwearparts.com](http://www.hardoxwearparts.com)

